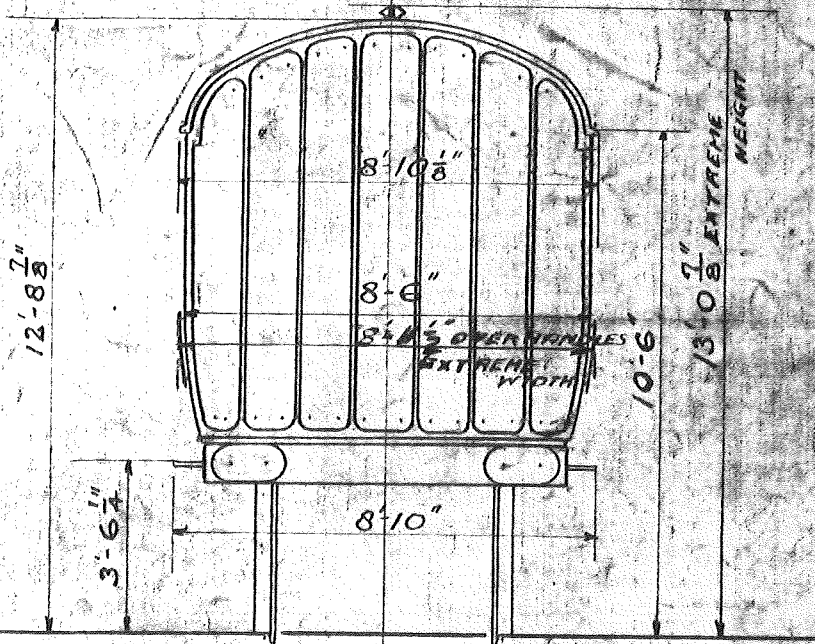
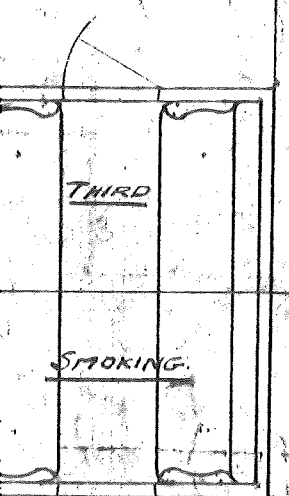
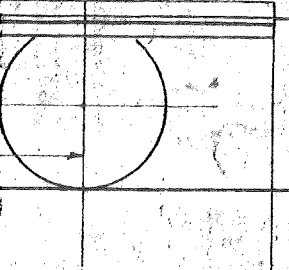


CODE: 1210<sup>2</sup>



CARRIAGE N<sup>OS</sup>

324, 325, 326, 327, 328, 329, 330, 331, 332 BUILT BY GNR 1911.

331, 332, 333, 334, 335, 336, 337 " " " " 1912.

GENERAL DRAWING N<sup>o</sup> 1067 - N

UNDERFRAME " "

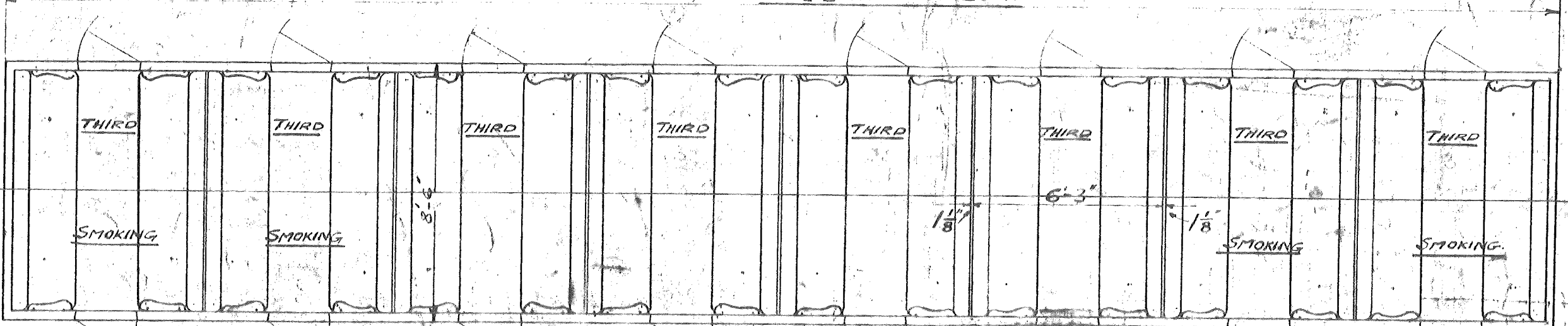
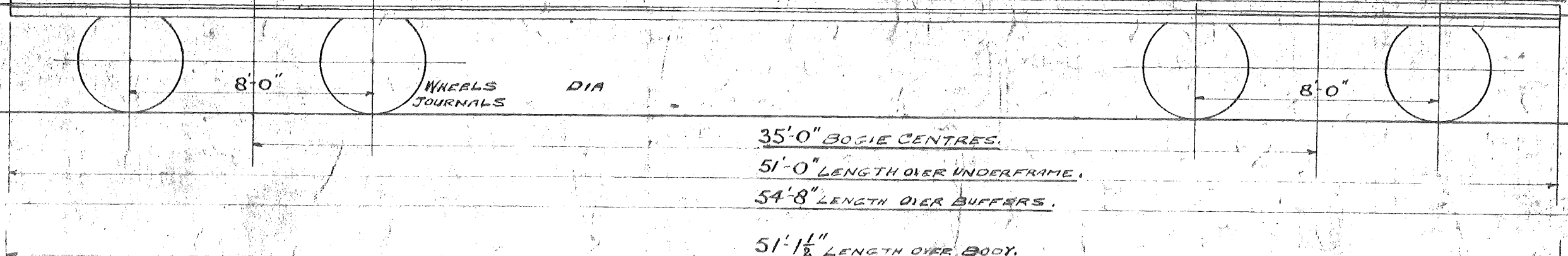
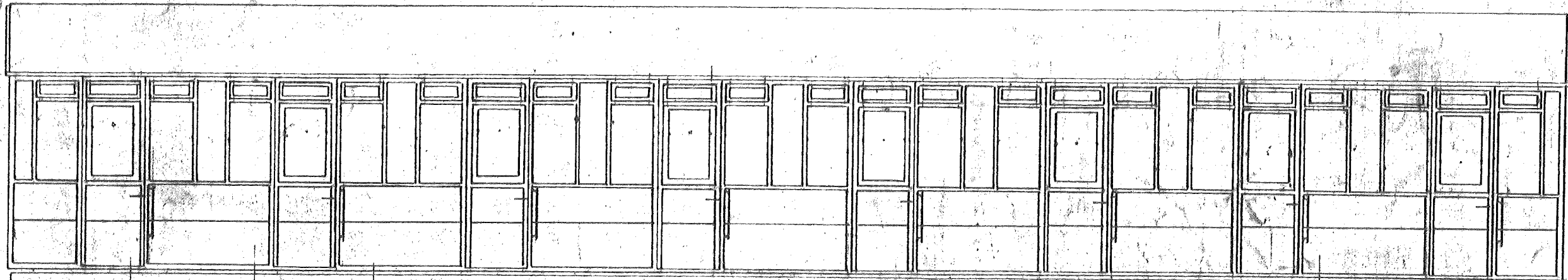
BOGIE.

8 THIRD CLASS COMPTS 80 SEATS.

T.C.P.  
WEIGHT 25-10-3.

ELECTRIC LIGHT.

VACUUM BRAKE.



C.L.C. BOGIE THIRD CLASS CARRIAGE.

CARRIAGE 1

32

33

GE

UN

BO

87

WE

ELA

YAC

12'-8 1/2"

3'-6 1/4"